



# LAO PDR 2018 Floods

## Results of the Post Disaster Needs Assessment



European Union  
ສະຫະພາບ ເອີຣົບ



# Disaster Event

- Continuous heavy rains between July and September 2018.
- On July 18-19, 2018, heavy rainfall caused by Tropical Storm Son-Tinh caused flooding in 55 districts of 13 provinces across northern, central, and southern Lao PDR.
- On July 23, 2018, the Xe-Pian Xe-Namnoy saddle dam collapsed, causing an unprecedented flashflood downstream.
- Further, on August 17-18, 2018, Tropical Storm Bebinca led to flooding in northern Laos, with impacts also felt in the south of the country.

# PDNA Methodology

- Based on an internationally recognized methodology used in large disasters worldwide.
- Provides a sound basis for strategic recovery planning by national/sub-national authorities.
- The assessment aims to:
  - ✓ Quantify damage and loss, including physical damage and socio-economic aspects;
  - ✓ Evaluate the overall impact of the disaster on the macroeconomic and human development context, and,
  - ✓ Identify recovery needs, priorities, and costs for a resilient recovery strategy.

# Basic Concepts

## Concept

### Damage

✓ **Damage** to infrastructure and physical assets is the quantification of public and private sector infrastructure and assets destroyed in the disaster

✓ **Damage** includes either total or partial destruction of the assets

### Loss

✓ **Loss** due to disruption of access to goods and services is defined as changes in economic flows and higher costs in production or lower revenue

✓ **Loss** can include: (i) reduced revenue; higher operational costs; and (iii) actions taken to reduce risk

### Needs

✓ **Recovery**: Based in loss, in terms of recuperation economic and human needs, livelihoods, access to services, means of production, security, etc.)

✓ **Reconstruction**: Derived from damages, including risk reduction and resilience building (“build back better”

✓ **Risk Reduction**: Build back better, decrease vulnerabilities and build resilience

# Sectors and Issues Covered

## Social Sector

- Housing and Settlements
- Education
- Health and Nutrition
- Culture

## Productive Sector

- Agriculture: Crops, Livestock, Fisheries, Forests & Irrigation
- Tourism
- Commerce and Industry

## Infrastructure Sector

- Transport
- Electricity
- Water Supply
- Waterways

## Crosscutting

- Disaster Risk Management
- Environment and Climate Change
- Governance
- Human Development (Gender, Livelihoods, and Social Protection)
- UXO

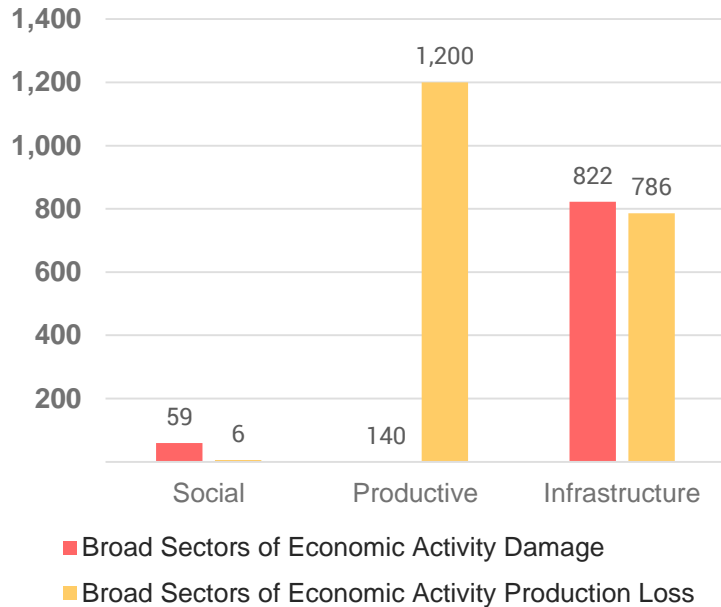
# Summary of Disaster Effects

# Summary of Total Effects (Damages and Losses) by Sector

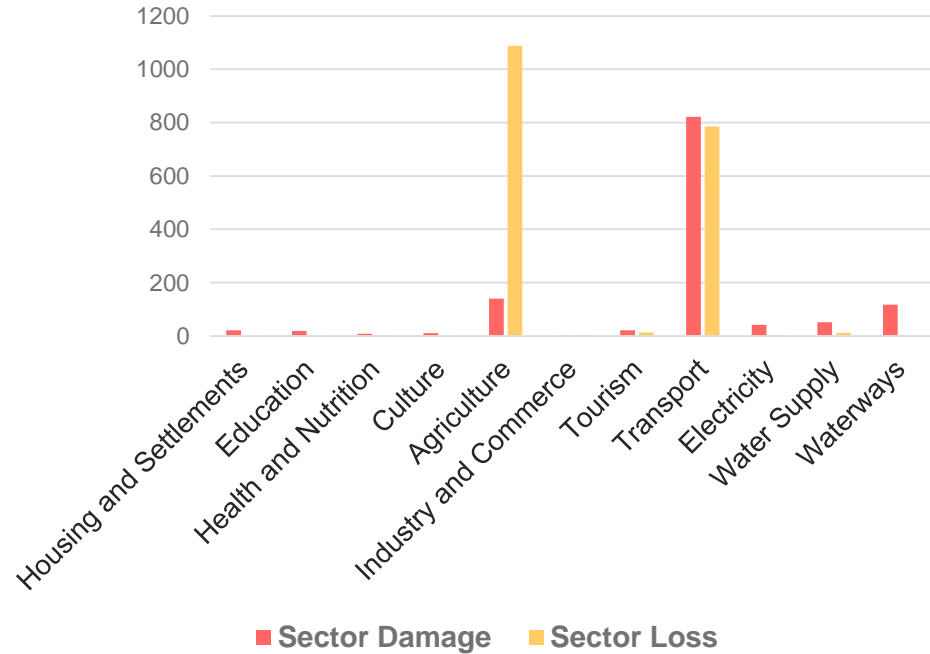
Sector/Sub-sector/Issue	Total (in Billion Kip)		
	Damage	Loss	Total Effects
<b>Social Sector</b>			
Housing and Settlements	21.12	0.57	21.7
Education	18.73	1.68	20.41
Health and Nutrition	8.58	3.32	11.89
Culture	10.13	0.25	10.38
<b>Productive Sector</b>			
Agriculture (Crops, Livestock, Fisheries, Forestry, Irrigation)	139.75	1,087.57	1,227.32
Industry and Commerce	0.80	2.99	3.79
Tourism	21.22	12.87	34.09
<b>Infrastructure Sector</b>			
Transport	822.01	785.80	1,607.81
Electricity	42.22	3.16	45.38
Water Supply	50.96	19.019	69.98
Waterways	116.90	0.00	116.90
<b>TOTAL (in Billion Kip)</b>	<b>1,252.42</b>	<b>1,917. 23</b>	<b>3,169.64</b>
<b>TOTAL (in US\$ approximately)</b>	<b>US\$147 million</b>	<b>US\$225 million</b>	<b>US\$371 million</b>

# Damages and Losses by Sector

**Distribution of Effects by Broad Sectors of Economic Activity (Billion Kip)**

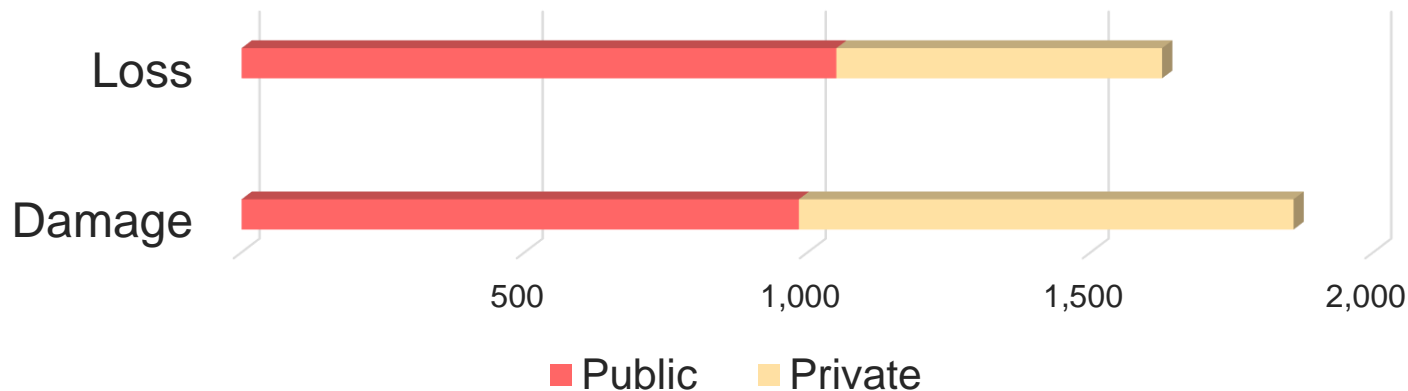


**Disaster Effects by Economic Sectors (Billion Kip)**



# Damage and Losses by Ownership

Distribution of Effects By Ownership  
(Billion Kip)

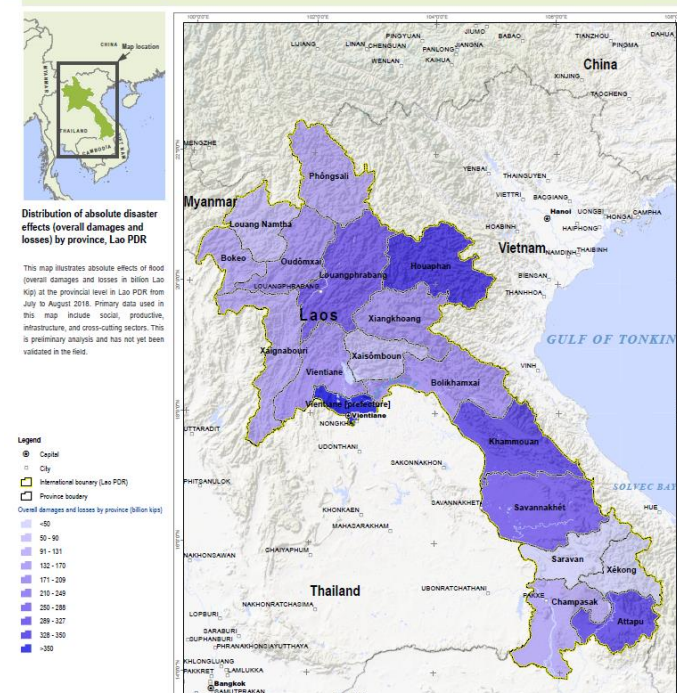


# Geographic distribution of disaster effects

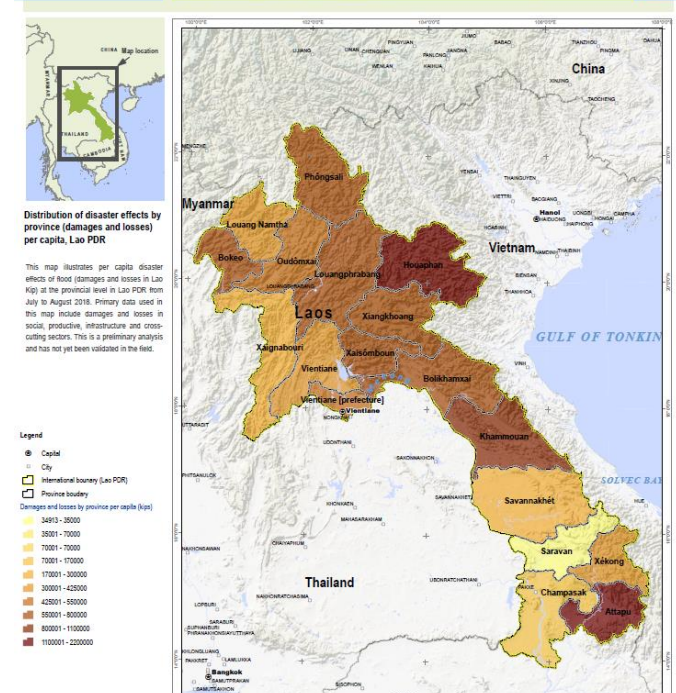
Total effects (overall damage and loss) by province (Billion Kip)

Disaster effects (damage and loss) by province per capita (Billion Kip)

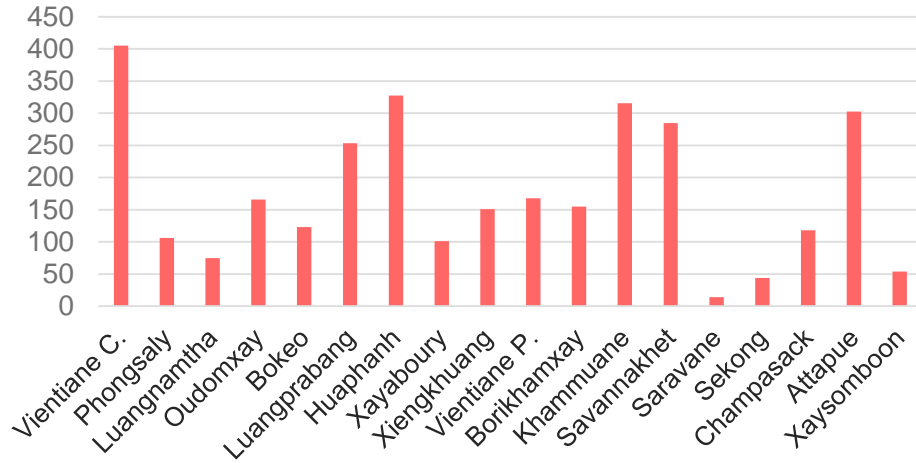
**LAO PDR**  
 Distribution of absolute disaster effects by province  
 Analysis: 19-21 October 2018 | Published 22 October 2018  
 PDM20181020LAO UNOSRT



**LAO PDR**  
 Distribution of disaster effects by province (per capita)  
 Analysis: 19-21 October 2018 | Published 22 October 2018  
 PDM20181020LAO UNOSRT



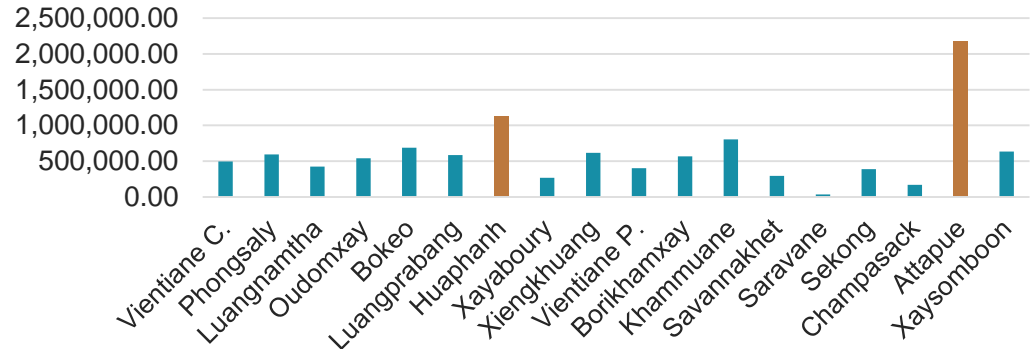
## Total effects (overall damage and loss) by province (Billion Kip)



In terms of overall disaster effects, **Vientiane Capital, Huaphanh, Khammuane and Attapue** were worst affected

**Attapue and Huaphanh** were the most affected provinces in terms of per capita impacts, marked in the dark brown color

## Disaster effects (damage and loss) by province per capita (Billion Kip)



# Economic and Social Implications



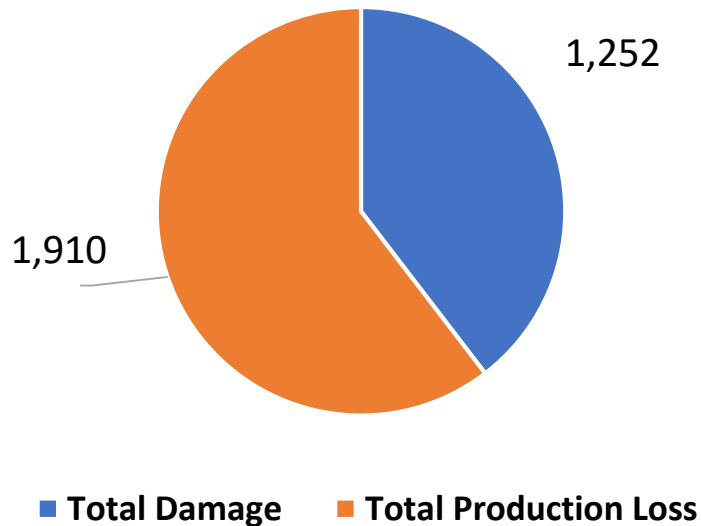
*Panorama view of affected houses in Sanamxay District of Attapeu province. ©UN-HABITAT*



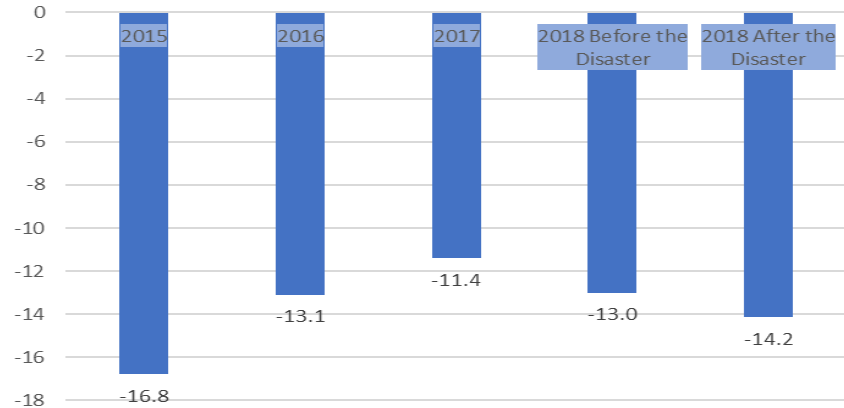
*Community consultation in Kham district of Xiengkhuang province. ©UN-HABITAT*

# Macroeconomic Impact

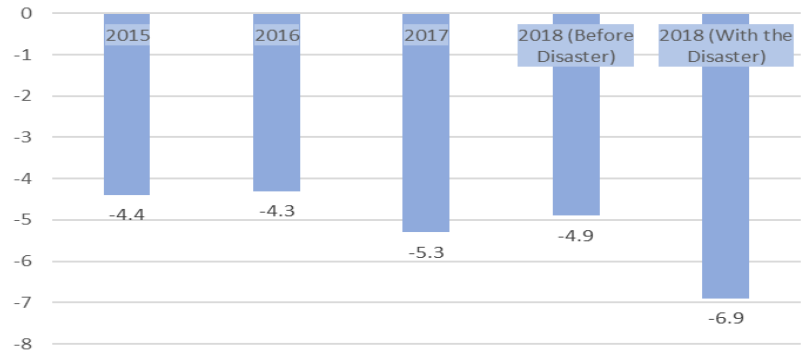
Distribution of the Value of Total Damage and Production Loss (Billion Kip)



Disaster Impact on Balance of Payments



Fiscal Position as Percent of GDP



# Social Implications

Unless immediate recovery actions are implemented:

- Malnutrition, including of children and young adults, due to lower food supply.
- Deprivation of the poor, especially women and other disadvantaged groups, in terms of health and education services.
- Increased vulnerability of women, children, elderly and PWDs living in temporary shelters.
- Temporary out-migration of agricultural workers who lost their livelihood.
- Higher level of indebtedness of farmers.
- Longer unemployment for workers in the informal sector.

# PDNA

## Sector Effects and Priorities



*The damage at Vat Ban Hinlad (1), Sanamxay District, Attapeu Province. Photo credit: Souvahnkhone Phathanh*



*Damaged school building and equipment at Sanamxay, Attapeu. Photo credit: Save the Children International staff*

# Social Sector



*Ruins of affected houses in Sanamxay District. ©UN-HABITAT*



*Superheroes of Laos – Children are staying in a partially damaged building with hazardous structural damages in Savanakhet. Photo credit: Tara I.M., Plan International Australia.*

# Housing and Settlements

Subsector	Damage (Billion Kip)	Loss (Billion Kip)	Total (Billion Kip)
Housing and Settlements	21.12	0.57	21.69

Recovery Needs	Short (Billion Kip)	Medium to Long (Billion Kip)	Total Needs (Billion Kip)
Rapid assessment of compromised areas	0.6	-	0.6
Capacity building in the housing sector	1.0	1.9	2.9
Rehabilitation/Reconstruction	38.0	26.3	64.3
Assessment through mapping of low-land/disaster prone areas	-	4.5	4.5
Awareness raising and relocation	-	1.3	1.3
<b>TOTAL</b>	<b>39.6</b>	<b>34</b>	<b>73.6</b>

## Top Priorities

1. Rapid assessment of low-land/disaster prone areas.
2. Capacity building based on BBB principles.
3. Housing rehabilitation and reconstruction.

## Key Recommendations

1. Future land allocations for housing should be carefully mapped for disaster risks.
2. Communities located at high risk areas need to be aware of the risks.
3. Draft guidelines on early warning systems, safe houses and other disaster risk reduction activities.
4. Train local carpenters, masons and communities on the BBB principles.
5. Combine financial and in-kind grants to successfully rehabilitate and reconstruct the damaged houses.

# Health and Nutrition

	Damage (Billion Kip)	Losses (Billion Kip)	Total Effects (Billion Kip)
Health Facilities (District Hospitals and Health Centers)	8.58	3.32	11.89

Recovery Needs	Total Needs (Billion Kip)
Reconstruction of health facilities	6.7
Nutrition	2.57
Disease prevention and control	6.15
<b>TOTAL</b>	<b>15.42</b>

## Key Recommendations

1. Apply the “Build Back Better” principles for the reconstruction of health facilities.
2. Increase support to health staff in the affected areas for improved prevention of malnutrition and good nutritional practices in the affected population.
3. Increase disease prevention and control preparedness, inclusive of support for outbreak investigation and response.

# Education

Sub-sector	Damages cost (Billion Kip)	Losses cost (Billion Kip)	Total Effects (Billion Kip)
Pre-Primary	0.29	0.84	0.37
Primary School	14.4	1.25	15.65
Secondary School	4.04	0.35	4.39
<b>Totals</b>	<b>18.73</b>	<b>1.68</b>	<b>20.41</b>

Recovery Needs	Short (Billion Kip)	Medium (Billion Kip)	Long (Billion Kip)	Total Needs (Billion Kip)
Priority 1 – Short Term Needs	Improving learning facilities for children to restart their education			168.9
Priority 2 – Medium Term Needs		Providing training building to make the education providers are disaster ready		18.9
Priority 3 – Long Term Needs			Strengthening DRR/DRM in Education sector	9.8
<b>TOTAL</b>	<b>168.9</b>	<b>18.9</b>	<b>9.8</b>	<b>197.6</b>

## Top Priorities

1. Improve learning facilities for children.
2. Provide of learning materials & equipment.
3. Create an enabling environment in schools.
4. Strengthen DRR/DRM system in the education sector and providing training/capacity building to make schools a safer place for learning.
5. Enhance knowledge and skills on DRR to students and public for a culture of safety.

## Key Recommendations

1. Implement the proposed Education Sector Recovery Strategy.
2. Allocate 1% of the Education budget to implement risk reduction in schools.
3. Strengthen MoES' central and local capacity on DRR/DRM.

# Culture

Subsector	Damage	Loss	Total
Built and non-moveable heritage	9.77	0.10	<b>9.87</b>
Heritage-associated infrastructure	0.30	0.00	<b>0.30</b>
Moveable heritage and repositories	0.00*	0.00*	<b>0.00*</b>
ICH and creative industries	0.03	0.15	<b>0.18</b>
Public administration	0.02	0.00	<b>0.02</b>
<b>TOTAL</b>	<b>10.12</b>	<b>0.25</b>	<b>10.36</b>

Recovery Needs	Short	Medium	Long	Total Needs
Heritage-associated infrastructure	3.22			<b>3.22</b>
Built and non-moveable heritage	3.62	12.97	1.66	<b>18.25</b>
Moveable heritage and repositories	0.83	0.83	8.3	<b>9.96</b>
ICH and creative industries	0.9	1.66	1.60	<b>4.16</b>
Public administration				
<b>TOTAL</b>	<b>8.57</b>	<b>15.46</b>	<b>11.56</b>	<b>35.59</b>

\*Quantitative data not available

## Top Priorities:

1. Repairing prioritized temples in Attapeu;
2. Providing emergency repair and stabilization of other cultural damaged properties (i.e. temples, stupas, sacred caves, etc.);
3. Repairing damaged infrastructure of Luang Prabang WH site;
4. Providing technical support for damaged collections, esp. temple collections (i.e. manuscripts, statues, etc.);
5. Providing financial and technical support for documenting and developing safeguarding strategies for intangible cultural heritage in Attapeu, especially for Oy ethnic group;
6. Providing financial support for recovery of local cultural industries;
7. To ensure that other recovery measures in other sectors (esp. housing) are appropriate to local culture and traditions.

## Key Recommendations:

1. To develop baselines for culture sector by developing inventories of built, moveable and intangible cultural heritage;
2. To develop safeguarding plans and Disaster Risk Management Plans for intangible cultural heritage, heritage sites and cultural properties; and cultural repositories;
3. To build capacity for cultural professionals and DRM professionals.

# Productive Sector



*Xe Pong lai Waterfall, showing the damaged area at the base of the waterfall, Sanamxay District, Attapeu Province. Photo credit: Sengalon Thongsavath*

# Agriculture (Crops, Livestock, Fisheries, Forestry, Irrigation)

Subsector	Damage	Loss	Total
Crops	10.1	1,010.7	1,020.7
Livestock	28.0	16.0	44.0
Fisheries		38.3	38.3
Forestry	10.1		10.1
Irrigation	91.6	22.6	114.2
<b>TOTAL</b>	<b>139.8</b>	<b>1,087.6</b>	<b>1,227.3</b>

Recovery Needs	Short	Medium	Long	Total Needs
Rice seeds and fertilizer	35.9	20.6		56.6
Replacement of livestock, fodder and vaccination	2.9	60.2		63.1
Replacement of fish fingerlings and feed	42.4			42.4
Irrigation repair and rehabilitation	34.0	16.2	28.8	79.0
Food assistance (cash)	116.3			116.3
<b>TOTAL</b>	<b>231.5</b>	<b>97.0</b>	<b>28.8</b>	<b>357.4</b>

## Top Priorities:

1. Provision of seeds and fertilizer for flood affected farmers
  - Very urgent for 2018/19 winter (dry season) crop
  - By May 2019 for next summer (wet season) crop
2. Replacement of dead livestock and fish fingerlings
3. Rebuild disaster resilient irrigation infrastructure damaged by the disaster

## Food Security:

1. Income loss at household level is significant, but most households currently cope (e.g. remittances, livestock sale, ...).
2. The situation of the 10-20% food insecure households pre-disaster further worsened and they have increased risk of malnutrition.

## Key Recommendations:

1. Develop and implement strategy and policy on climate resilient agriculture systems.
2. Develop and implement regular damage and loss reporting system led by DoSW.
3. Review national social protection policy and disaster safety net scheme.
4. Strengthen management and disaster resistant construction of irrigation systems and watershed management infrastructure
5. Design and implement regular food and nutrition security monitoring system.

# Industry and Commerce

Subsector		Damage (Billion Kip)	Loss (Billion Kip)	Total Effects (Billion Kip)
Industry	Manufacturing of food products	0.073	0.691	0.764
	Manufacturing of Beverages and tobacco	0.0438	0.081	0.1248
	Footwear and Leather goods			
	Other Manufacturing		1.401	1.401
Services	Wholesale and retail trade	0.68	0.816	1.496
	Accommodation and food services			
<b>TOTAL</b>		<b>0.80</b>	<b>2.99</b>	<b>3.78</b>

Recovery Needs	Short	Medium	Total
Short term low cost financing mechanisms for MSEs	1.5		1.5
Develop incentive scheme for increased insurance participation for MSEs		2	2
Strengthen capacity in DRM among SMEs		1.2	1.2
<b>TOTAL</b>	<b>1.5</b>	<b>3.2</b>	<b>4.7</b>

## Top Priorities:

1. Increase insurance coverage to better manage future risk.
2. Facilitate electricity and water supply availability, particularly to MSEs in the manufacturing sub-sector.
3. Greater access to reinvestment financing.
4. Capacity building in supply chain management.

## Key Recommendations:

1. Facilitate quicker entry into the formal sector.
2. Facilitate short term financing mechanisms.
3. Build capacity in DRM among MSEs.

# Tourism

Subsector	Damage	Loss	Total
Accommodations	1.14	1.97	3.11
Restaurants	4.04	3.93	7.97
(Natural) Tourism sites	12.38	2.61	14.99
Community facilities, sites and products	4.14	1.00	5.14
Other facilities	0.16	0.09	0.25
<b>TOTAL</b>	<b>21.87</b>	<b>9.59</b>	<b>31.46</b>

Recovery Needs	Short	Medium	Long	Total Needs
Accommodations	1.37			1.37
Restaurants	4.85			4.85
(Natural) Tourism sites	15.37	0.36	0.66	16.39
Community facilities, sites and products	4.91	5.55		10.46
Other facilities	3.19			3.19
Sector-wide support	1.00	1.46	0.17	2.63
<b>TOTAL</b>	<b>30.69</b>	<b>7.37</b>	<b>0.83</b>	<b>38.89</b>

## Top Priorities:

1. Repairing/reconstruction of damaged community-based tourism operations;
2. Repairing/reconstruction of damaged accommodations and restaurants;
3. Recover of the Xe Pa and Xe Bonglay waterfalls including the development of a crafts market;
4. Repairing/reconstruction of damaged tourism sites and other tourism facilities;
5. Organizing marketing campaigns to build confidence in tourism sector.

## Key Recommendations:

1. To consider the application of tax or financing policies for affected businesses;
2. To build capacity for public/private sectors operators in DRR, Tourism Crisis Communication and Build Back Better.

# Infrastructure Sector



Example of damaged distribution grids



Bridge on R3 (Photo on 6 October 2018)



Nam Xeuang Bridge Damaged of approach slab (photo on 5 October 2018)



Damage on mainline distribution network of Nam Papa in Ngoy district of Luang Prabang province

# Transport

Subsector	Damage (Billion Kip)	Loss (Billion Kip)	Total Effects (Billion Kip)	
TOTAL	822.01	785.80	1,607.81	
Recovery Needs	Short (Billion Kip)	Medium (Billion Kip)	Long (Billion Kip)	Total Needs (Billion Kip)
TOTAL	582	658	834	2,074

## Top Priorities:

1. Emergency repair of the damaged roads and bridges.
2. Spot improvements for damaged roads.
3. Conduct climate resilient road improvements.

## Key Recommendations:

1. Incorporate climate resilient aspects into road design and maintenance procedures.
2. Incorporate vulnerable road data into road asset management system.
3. Implement effective road maintenance.
4. Conduct critical assessment of the road network.
5. Prepare investment plan for the improvement of vulnerable sections of critical sections of the road network.

# Electricity

Subsector	Damage (Billion Kip)	Loss (Billion Kip)	Total Effects (Billion Kip)
Transmission line and substation	15.3	-	15.3
Distribution grids	26.9	-	26.9
Energy sector	-	3.16	3.2
<b>TOTAL</b>	<b>42.22</b>	<b>3.16</b>	<b>45.38</b>

Recovery Needs	Short (Billion Kip)	Medium (Billion Kip)	Long (Billion Kip)	Total Needs (Billion Kip)
Priority 1: Repair of distribution grids	26.9	-	-	26.9
Priority 2: Installation of slope protection, etc. for transmission lines and substations	15.3	-	-	15.3
Priority 3: Preparation of spare parts for distribution grids	-	-	-	-
<b>TOTAL</b>	<b>42.2</b>	<b>-</b>	<b>-</b>	<b>42.2</b>

## Top Priorities

1. Repair of distribution grids.
2. Install slope protection, sag reduction of conductor, repair tower foundation for transmission lines and substations.
3. Prepare spare parts for distribution grids.
4. Reconstruct transmission tower including re-stringing of conductor, if necessary.

## Key Recommendations

1. Review of the distribution line routes, and re-route, if necessary.
2. Prepare suitable number of spare parts in northern area.
3. Review of countermeasures for the large landslide area in detailed by through qualified engineers.

# Water Supply and Sanitation

Subsector	Damage (Billion Kip)	Loss (Billion Kip)	Total Effects (Billion Kip)
Urban Water Supply	7.074	7.739	14.813
Rural water supply and sanitation	43.89	11.28	55.17
<b>TOTAL</b>	<b>50.96</b>	<b>19.019</b>	<b>69.98</b>

Recovery Needs	Short (Billion Kip)	Medium (Billion Kip)	Long (Billion Kip)	Total Needs (Billion Kip)
Urban water supply	6.31	4.65	1.6	12.56
Rural water supply and sanitation	24.37	29.70	1.7	55.77
<b>TOTAL</b>	<b>30.68</b>	<b>34.35</b>	<b>3.3</b>	<b>68.33</b>

## Top Priorities:

1. Restore water supply services, and reconstruct / replace temporarily fixed damaged components.
2. Water points disinfection including field test kits and WASH emergency pre-positioning.
3. Rehabilitate/repair water supply systems and family latrines including hygiene promotion (behavior change).
4. Provide Capacity building for DRR for flood prone village.

## Key Recommendations:

1. Better preparedness at provincial level, & community resilience.
2. **Short term:** restore access to water supply back normal;
3. **Medium term:** focus on rehabilitation;
4. **Medium and long term:** build capacity for design and implementation for resilience measures in the sector, development of DRR strategy at provincial level, including training of NPSEs in their role of facilitating service delivery and planning for flood affected areas; and design and construction of Climate resilience WASH facilities in communities and institutions (Schools, Health Centers) based on BBB principles.
5. Improve coordination at sub national level to respond to the victims of emergencies

# Waterways

Subsector	Damage (Billion Kip)	Loss (Billion Kip)	Total Effects (Billion Kip)
1. River courses	86.7		86.7
2. Dikes & Embankments	5.0		5.0
3. Structures	25.2		25.2
<b>TOTAL</b>	<b>116.9</b>		<b>116.9</b>

Recovery Needs	Short (Billion Kip)	Medium (Billion Kip)	Long (Billion Kip)	Total Needs (Billion Kip)
1. Engineering survey & Design	13.5			13.5
2. Infrastructure recovery and improvement	85.6	80.9	44	210.5
3. Sub-sector capacity development on DRM	6	5	15	26
<b>TOTAL</b>	<b>105.1</b>	<b>85.9</b>	<b>59</b>	<b>250</b>

## Top Priorities:

1. Engineering survey & design for recovery projects.
2. Vientiane C. Mekong: mainstream embankment recovery.
3. Khammouane Mekong: mainstream bank erosion recovery.
4. Xayabury Mekong: mainstream structure recovery.
5. Luangprabang Nam Khan: River dike construction.

## Key Recommendations:

1. Engineering survey & design to be done immediately.
2. Key infrastructure to be recovered before the next rain season.
3. All physical construction to be completed by the 3<sup>rd</sup> year.

# Crosscutting Issues

# Disaster Risk Reduction

Subsector	Damage (billion Kip)	Loss (Billion Kip)	Total (Billion Kip)
DRR	2.28	1.13	3.41
<b>TOTAL</b>	<b>2.28</b>	<b>1.13</b>	<b>3.41</b>

Recovery Needs	Short Term (Billion Kip)	Medium Term (Billion Kip)	Long Term (Billion Kip)	Total Needs (Billion Kip)
Priority 1	14.12	79.26	27.79	121.20
<b>TOTAL</b>	<b>14.12</b>	<b>79.26</b>	<b>27.79</b>	<b>121.20</b>

## Top Priorities to Protect Building Back Better:

1. Strengthen DRR legal and regulatory framework and institutions.
2. Capacitate EOC/MLSW to develop an effective Incident Command System from national to community level.
3. Risk-informed development planning, budgeting, and financing to strengthen resilience of critical, high-risk sectors.
4. Emergency Standard Operating procedures for dams and end-to-end early warning system for downstream, and high-risk areas.
5. Prepare for coordinated recovery.

## Key Recommendations:

1. Build essential DRR capacities and actions to institutionalize them.
2. Improve risk and capacity assessment to better target DRR interventions and support rapid analysis and end-to-end early warning.
3. Consolidate fragmented disaster units at province / district levels.
4. Build support for local level risk management by province and national agencies, led by EOC/MLSW.

# Environment and Climate Change

Environment Asset	Damage (Billion Kip)	Loss (Billion Kip)	Total (Billion Kip)
River Bank Protection	27.3		27.3
Plantation	13		13
Water Level monitor station 9 units	0.535		0.535
<b>TOTAL</b>			<b>40.835</b>

Recovery Needs	Short (Billion Kip)	Medium	Long	Total Needs (Billion Kip)
Provision of water level monitor to support EWS	9			0.535
<b>TOTAL</b>				<b>0.535</b>

## Top Priorities:

1. River bank protection construction
2. Replantation
3. Provision of water level monitor at Oudomxay, Bolikhamxai, Khammuone, Savanakhet (9 units)

## Key Recommendations:

1. Strengthen, expansion and maintenance of effective national systems for forecasting, early warning and information on disasters.
2. Strengthen community based environment and natural resource management practices for sustainable livelihood and disaster risk reduction in prone areas of Lao PDR.

*N.B. The estimates have been included in the Agriculture and Waterways Sectors*

# Governance

Subsector		Damage (Billion Kip)
MOHA	Administrative Mapping	0.29
	Administrative village offices	1.25
MOHA & MPS	Citizen Management/reissuing important documents	1.2
MICT	Mass Media/Information dissemination	6.98
MOJ	Notary services to support document issuance	0.52
<b>TOTAL</b>		<b>10.24</b>

Recovery Needs	Short	Long	Total Needs (Billion Kip)
	(Billion Kip)	(Billion Kip)	
MOHA Mapping	0.29	0.29	0.58
MOHA Administrative Village Office	1.5		1.5
MOHA & MPS	1.44		1.44
MPS	0.95	0	0.95
MICT	6.98	59.68	66.66
MOJ	0.53	1.05	1.58
<b>TOTAL</b>	<b>11.69</b>	<b>61.02</b>	<b>72.71</b>

## Top Priorities:

1. Conduct administrative mapping
2. Re-issue important documents
3. Connecting people to needed information
4. Provide legal aid and justice advice

## Key Recommendations:

1. To strengthen resilience, conduct awareness and post-disaster assessment training
2. Review procurement process to identify ways to provide quick support in case of emergencies

# Human Development (Gender, Livelihoods, Social Protection)

Recovery Needs	Short (Billion Kip)	Medium (Billion Kip)	Long (Billion Kip)	Total Needs (Billion Kip)
Child Protection	2.2	5.1	2.8	10.1
Gender based Violence	2.3	6.7	4.5	13.5
Gender	41.6	41.2	27.4	110.2
People with Disabilities	25.8	20.6	20	66.4
<b>TOTAL</b>	<b>71.9</b>	<b>73.6</b>	<b>54.7</b>	<b>200.2</b>

## Top Priorities:

1. Provide child protection services to displaced children, focusing on children without adequate parental care in Attapeu to address their needs for psychosocial support.
2. Support LWU (as core key agency) to coordinate with sectors to prevent and respond to GBV through trainings and make GBV services available to survivors and women and girls at risk in Attapeu and other provinces via women friendly spaces and awareness.
3. Ensure that the disaster response strategy is gender-responsive and addresses the gender and intersectionality concerns.
4. Ensure that the disaster response strategy includes all persons with disabilities through a social protection scheme component for the elderly and disabled, so that they are not left behind.

## Key Recommendations:

1. Build capacity of children and families for prevention and response to disaster risks through a strengthened child protection system.
2. Strengthen institutional capacity of LWU based on the assessment results and provide training to relevant sectors to ensure multi-sectoral GBV response, and improve data collection system for GBV cases.
3. Strengthen the capacity and systems of the LWU to effectively engage in gender-responsive disaster preparedness, response, and recovery in relevant sectors, especially to support women to build resilience to disasters, including through climate-resilient livelihoods.
4. Collect disaggregated data for people with disabilities to ensure that their needs are met.

# UXO

Recovery Needs / UXO Clearance operations	Short-Term (Hectares)	Long-Term (Hectares)	Total Needs (Hectares)	Total Needs (in Billion LAK)
Attapeu	306	1,800	2,106	44.8
Khammouane	400	23,500	23,900	507.9
Savannakhet	400	10,500	10,900	231.6
Oudomxay	144	Not yet surveyed	144	3.1
<b>Totals</b>	<b>1,250</b>	<b>35,800</b>	<b>37,050</b>	<b>787.3</b>

## Top Priorities:

Clearance operations in the provinces of:

1. Attapeu
2. Khammouane
3. Savannakhet
4. Oudomxay

## Key Recommendations:

1. Prioritize the survey and confirmation of UXO presence in residential areas, agricultural land, and in areas where there are repairs of vital infrastructure.
2. Conduct a comprehensive survey, with a systematic approach, to quantify the extent of actual UXO contamination in Khammouane (similarly to Savannakhet).
3. Coordinate within the UXO Sector and resource mobilization to fill the gaps in the identified priority areas.
4. Strengthen the UXO Risk Education for local communities and humanitarian actors.

# Recovery Needs

## Summary of Total Needs

Total  
(in Billion Kip)

	Short term	Medium term	Long Term	Total Needs
<b>Social Sector</b>				
Housing and Settlements	39.6	34		73.6
Education	168.9	18.9	9.8	197.6
Health and Nutrition				15.42
Culture	8.57	15.46	11.56	35.59
<b>Productive Sector</b>				
Agriculture (Crops, Livestock, Fisheries, Forestry, Irrigation)	231.5	97	28.8	357.4
Tourism	68.04	7.37	0.83	76.24
Industry and Commerce	1.5	3.2		4.7
<b>Infrastructure Sector</b>				
Transport	582	658	834	2,074
Water Supply and Sanitation	30.68	34.35	3.3	68.33
Waterways	105.1	85.9	59	250.0
Electricity	42.2			42.2
<b>Crosscutting Issues</b>				
Disaster Risk Management				
Governance	11.69		61.03	72.72
Environment				0.535
Employment and Livelihoods	71.9	73.6	54.7	200.2
UXO	26.6		760.7	787.3
<b>TOTAL (in Billion Kip)</b>	<b>1,324.22</b>	<b>1,024.43</b>	<b>1,008.32</b>	<b>4212.99</b>
TOTAL (in US\$ approximately)				US\$ 493 million

# Towards a Recovery Strategy

## ▪ Principles

- ✓ Rapid rebuilding of people's livelihoods and the revitalization of the local economy focusing on the most vulnerable and socially disadvantaged groups.
- ✓ Secure development gains.
- ✓ Coordinated and coherent approaches to recovery.
- ✓ Building Back Better (BBB).

## ▪ Key Issues

- ✓ Project preparation and implementation
- ✓ Procurement
- ✓ Prioritization and targeting

# 5 Key Priorities Going Forward

1. Ensuring the safety and security, food security and nutrition, and access to basic services of the affected population.
2. Economic recovery and revitalization focusing on the most needy.
3. Creating resiliency through Building Back Better.
4. Building the capacity of the national and local government and communities for Disaster Risk Management for sustainable development.
5. Improving coordination with and among development partners as well as local governments.



Thank you!



European Union  
ສະຫະພາບ ເອີຣົບ

